

ALUBOX Series

Junction boxes
in IP66 aluminium alloy



> ENCLOSURES – IP66



ALUBOX Series



ALUBOX-EX Series



| Dimensions (mm) | Screw for attaching cover | Earthing screws | Weight (Kg) | | | |
|-----------------|---------------------------|-----------------|-------------|------|--|-----------------|
| 100 x 100 x 59 | ☒ n° 2 M5x10mm | n°1 M4x6 | 0,290 | 1/32 | | 653.00 653.9000 |
| 140 x 115 x 60 | ☒ n° 4 M5x16mm | n°1 M4x6 | 0,390 | 1/24 | | 653.01 653.9001 |
| 166 x 142 x 64 | ☒ n° 4 M5x16mm | n°1 M4x6 | 0,614 | 1/16 | | 653.02 653.9002 |
| 192 x 168 x 80 | ☒ n° 4 M5x16mm | n°1 M4x6 | 0,920 | 1/12 | | 653.03 653.9003 |
| 253 x 217 x 93 | ☒ n° 4 M6x20mm | n°1 M4x6 | 1,430 | 1/6 | | 653.04 653.9004 |
| 314 x 264 x 122 | ☒ n° 4 M6x20mm | n°1 M4x6 | 2,236 | 1/2 | | 653.05 653.9005 |
| 410 x 315 x 153 | ☒ n° 4 M6x20mm | n°1 M4x6 | 3,861 | 1 | | 653.07 653.9007 |

- Enclosure and cover in die-cast aluminium.
- Externally varnished.
- With stainless steel screws for attaching cover and self-tapping zinc-

coated steel screws for earthing the enclosure and cover.

☒ = Counter-sunk head screw.

☒ = Flat head screw.

> MOUNTING PLATES

> DIN RAIL KIT

| For enclosures (mm) | Screw for attaching cover | Thickness (mm) | Weight (Kg) | | | |
|---------------------|---------------------------|----------------|-------------|------|--|-----------|
| 100 x 100 x 59 | | | | | | 1 653.020 |
| 140 x 115 x 60 | n° 4 M4x6 | 1,5 | 0,140 | 1/40 | | 1 653.011 |
| 166 x 142 x 64 | n° 4 M4x6 | 1,5 | 0,213 | 1/20 | | 1 653.012 |
| 192 x 168 x 80 | n° 4 M4x6 | 1,5 | 0,245 | 1/20 | | 1 653.013 |
| 253 x 217 x 93 | n° 4 M4x6 | 1,5 | 0,423 | 1/10 | | 1 653.014 |
| 314 x 264 x 122 | n° 4 M4x6 | 1,5 | 0,626 | 1/10 | | 1 653.015 |
| 410 x 315 x 153 | n° 4 M4x6 | 2 | 1,436 | 5 | | 1 653.017 |

- Zinc-coated steel plate.
- With zinc-coated steel self-tapping screws for attaching the plate.



Enclosures and covers in aluminium alloy with blank walls and covered.



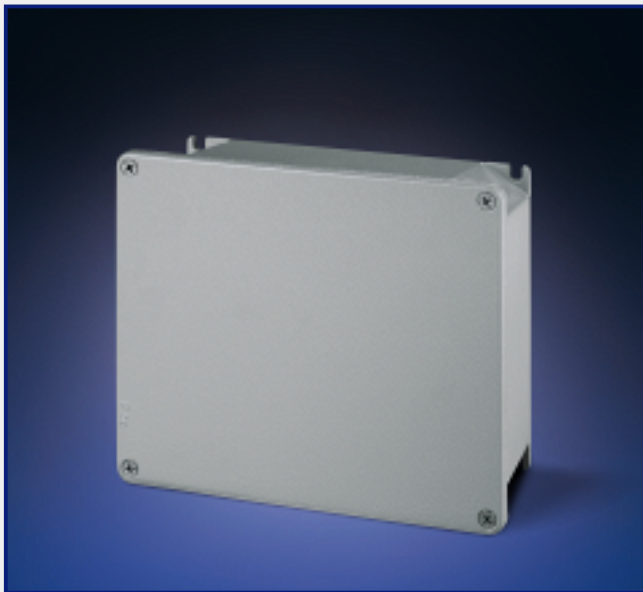
Holding seal in expanded EPDM, already mounted in place on the cover.



Fixing to wall by brackets incorporated in the enclosure base.

ALUBOX Series

> JUNCTION BOXES IN ALUMINIUM ALLOY (STANDARD USE)



> REFERENCE STANDARDS

EN 60670-22

Boxes and enclosures for electrical accessories for household and similar fixed electrical installations.
Part 22: particular requirements for connecting boxes and enclosures.

> VERSIONS

| | |
|---|-----------------|
|  | Enclosure IP66 |
|  | Mounting plates |
|  | DIN rail kit |

> TECHNICAL CHARACTERISTICS

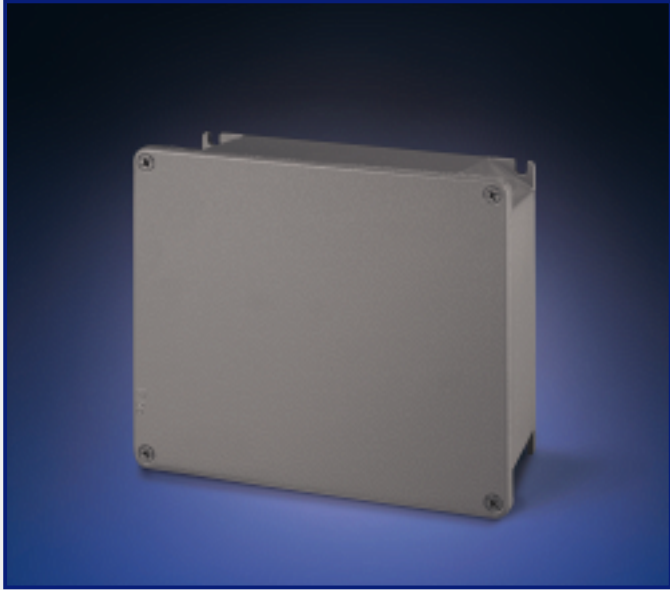
| | |
|--|---|
| Protection degree: | IP66 |
| Operating temperature according to the reference standard: | -25°C +60°C |
| Max. operating temperature (Short period): | -40°C +90°C |
| Material: | Aluminium alloy |
| IK degree at 20°C: | IK08 |
| Cable inlets: | Blank sides |
| DIN rail fixing: | Yes |
| Colour: | Grey RAL 9006 with metallic pigments |

> BEHAVIOUR WITH CHEMICAL AND ATMOSPHERIC AGENTS

| Saline solution | Acids | | Bases | | Solvents | | | | Mineral oil | UV rays |
|-----------------|--------------------|-----------|--------------------|-----------|--------------------|--------------------|--------------------|-----------|-------------|-----------|
| | Concentrated | Diluted | Concentrated | Diluted | Hexane | Benzol | Acetone | Alcohol | | |
| Resistant | Limited Resistance | Resistant | Limited Resistance | Resistant | Limited Resistance | Limited Resistance | Limited Resistance | Resistant | Resistant | Resistant |



For specific substances please contact our technical service.

> **JUNCTION BOXES IN ALUMINIUM ALLOY (FOR ZONE 22)**



- Suitable for outdoor use.
- Supplied with enclosure earthing kit.
- Use only non-sparking components and cable glands compliant with the ATEX directive.

> **VERSIONS**

| | |
|--|-----------------|
|  | Enclosure IP66 |
|  | Mounting plates |
|  | DIN rail kit |

> **REFERENCE STANDARDS**

| |
|--|
| <p>EN 61241-0 Electrical apparatus for use in the presence of combustible dust. <i>Part 0: General requirements.</i></p> |
| <p>EN 61241-1 Electrical apparatus for use in the presence of combustible dust. <i>Part 1: Protection by enclosures "tD".</i></p> |
| <p>EN 60079-0 Electrical apparatus for explosive gas atmospheres. <i>Part 0: General requirements.</i></p> |
| <p>EN 60079-15 Electrical apparatus for explosive gas atmospheres. <i>Part 15: Construction, test and marking of type of protection "n" electrical apparatus.</i></p> |

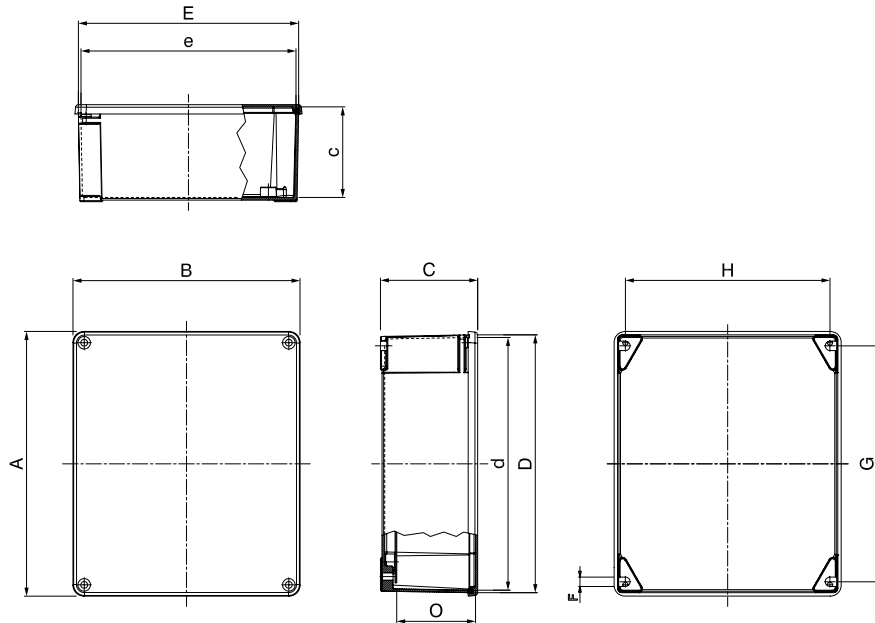
> **TECHNICAL CHARACTERISTICS EX**

| | |
|--|--|
| ATEX Code: | Ex II 3GD |
| Type of EX protection: | Ex nA II Ex tD A22 IP66 T90°C U |
| Operating temperature according to the reference standard: | -20°C +60°C |
| Maximum permissible surface temperature: | T90°C |
| Protection degree: | IP66 |
| Impact resistance: | Low mechanical risk (4J). |
| Material: | Aluminium alloy |
| IK degree at 20°C: | IK08 |
| Cable inlets: | Blank sides |
| DIN rail fixing: | Yes |
| Colour: | RAL 7037 |
| CE Certification type: | SCAME ATEX 01U |

> **BEHAVIOUR WITH CHEMICAL AND ATMOSPHERIC AGENTS**

| Saline solution | Acids | | Bases | | Solvents | | | | Mineral oil | UV rays |
|-----------------|--------------------|-----------|--------------------|-----------|--------------------|--------------------|--------------------|-----------|-------------|-----------|
| | Concentrated | Diluted | Concentrated | Diluted | Hexane | Benzol | Acetone | Alcohol | | |
| Resistant | Limited Resistance | Resistant | Limited Resistance | Resistant | Limited Resistance | Limited Resistance | Limited Resistance | Resistant | Resistant | Resistant |

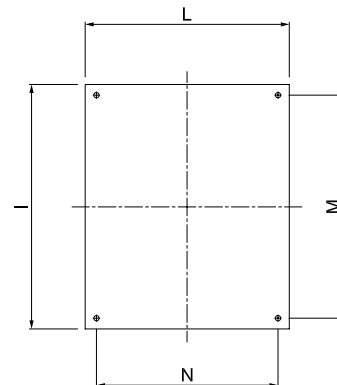
For specific substances please contact our technical service.

> DIMENSIONS
ENCLOSURES


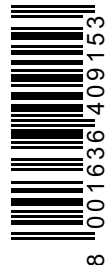
| | | | External dimensions (with cover) | | | External box dimensions | | Internal dimensions (with cover) | | | Surface mounting points | | | Useful height |
|---------------|-----------------|----|-------------------------------------|-----|-----|----------------------------|-----|-------------------------------------|-----|-----|----------------------------|-----|-----|------------------|
| | | | A | B | C | D | E | c | d | e | F | G | H | O |
| | | □ | mm | mm | mm | mm | mm | mm | mm | mm | mm | mm | mm | mm |
| 653.00 | 653.9000 | 32 | 100 | 100 | 59 | 94 | 94 | 53 | 90 | 90 | 6 | 88 | 80 | X |
| 653.01 | 653.9001 | 24 | 140 | 115 | 60 | 134 | 109 | 55 | 130 | 104 | 6 | 120 | 100 | 45 |
| 653.02 | 653.9002 | 16 | 166 | 142 | 64 | 160 | 136 | 58 | 156 | 132 | 7,5 | 144 | 125 | 48 |
| 653.03 | 653.9003 | 12 | 192 | 168 | 80 | 185 | 161 | 74 | 180 | 156 | 6 | 168 | 149 | 64 |
| 653.04 | 653.9004 | 6 | 253 | 217 | 93 | 247 | 211 | 85 | 242 | 206 | 9 | 226 | 196 | 75 |
| 653.05 | 653.9005 | 2 | 314 | 264 | 122 | 305 | 255 | 114 | 299 | 249 | 9 | 275 | 236 | 103 |
| 653.07 | 653.9007 | 1 | 410 | 315 | 153 | 400 | 305 | 144 | 393 | 298 | 9 | 367 | 283 | 127 |

MOUNTING PLATES

| | | | Box reference (mm) | | | |
|----------------|---|---------|-----------------------|-----|-----|-----|
| | □ | | I | L | M | N |
| | | | mm | mm | mm | mm |
| 653.011 | 1 | 140x115 | 122 | 97 | 107 | 66 |
| 653.012 | 1 | 166x142 | 147 | 123 | 121 | 98 |
| 653.013 | 1 | 192x168 | 165 | 124 | 153 | 112 |
| 653.014 | 1 | 253x217 | 206 | 172 | 188 | 153 |
| 653.015 | 1 | 314x264 | 254 | 210 | 238 | 198 |
| 653.017 | 1 | 410x315 | 349 | 260 | 333 | 248 |



ZP00488-GB-3



Skaan Tavan Parto
Tel:+98 021 22890767-22890768
Fax:+98 021 22760056
Email:tavanparto@scame.ir
www.scame.ir

